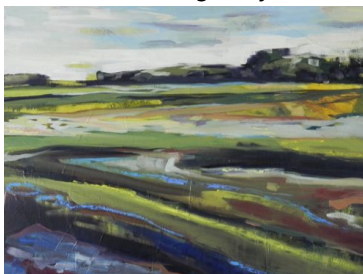


**NEWBURYPORT ART ASSOCIATION  
2018 FALL MEMBERS' JURIED SHOW, PART TWO**

November 2-17, 2018

*Juror: Karen Tusinski, Tusinski Gallery, Rockport, MA*

*www.tusinskigallery.com*



**CALL FOR ENTRIES**

**Acrylic, Fine Crafts, Mixed Media, Pastel, & Photography**

**Dates to Remember:**

- Receiving: Sunday, October 28, 11a.m.–5p.m.
- Notification of Accepted Works, Wednesday, October 31 on the NAA website
- Reception: Saturday, November 3, 7-9p.m.  
Pick-up Unaccepted Work, Friday, November 2 & Saturday, November 3, gallery hours
- Pick-up Accepted Work: Sunday, November 18, 11a.m-5p.m.

**Requirements:**

- Juror's Awards
- Two Entries per artist/ \$15 per piece (unless Artist Plus Member)
- Maximum size 60" x 40" **OR** 40" x 60" (size limit includes frame)
- All work must be for sale
- Work previously exhibited in **one** NAA Juried Show **MAY NOT** be entered
- Work previously exhibited in one NAA Open show **MAY** be entered
- All work must be original, created within the past three years, and conceived by the artist
- No reproductions or giclee prints
- **No wet paintings – if a painting cannot be handled, please choose a different work**
- Gallery wrapped canvas must have deep profile stretcher, stapled on back w/gessoed or painted sides
- Submission of an entry constitutes agreement with all the terms of the NAA shows and Artist grants rights of use of images for marketing purposes only

**PLEASE NOTE FRAMING REQUIREMENTS!**

- o Acceptable hardware for wood frames: screw-eyes or d-rings with wire
- o Acceptable hardware for metal frames: hardware that screws secure in track (**not sliding**)
- o No saw tooth hangers, spring clips, tension mounts, standing photo frames, or pop-in frames

Please visit our website to enter the show online, <http://www.newburyportart.org>, and complete the Enter a Show form. Completing the process online will enable you to pre-pay your show entry fees prior to receiving. You must still bring works in to the gallery during receiving hours. The show is juried "live", not digitally. If you upload images, they can be included in the online gallery and a slide show of the exhibitions we now make available in the Sargent Gallery.

**Insurance & Artist's Responsibility** Works will be handled with all possible care. NAA provides insurance up to 65% of retail value declared by the artist, from the day of the receipt of the artwork to the final day of the scheduled pick-up period, or delivery of and payment for work sold to the buyer. The artist bears all responsibility for loss of, or damage to, work not picked up by the end of the scheduled pick-up period. NAA is not responsible for work not removed by final day of scheduled pick-up period. Artists will be charged \$20 late fee for work left beyond the pick-up period, unless prior arrangements are made with the office. NAA takes a 35% commission on sales. Please provide notification in advance if someone other than the artist will be picking up artwork.



Newburyport Art Association  
65 Water Street, Newburyport, MA 01950  
[www.newburyportart.org](http://www.newburyportart.org) 978.465.8769