

The Sketch Pad

Newburyport Art Association Member Newsletter

• www.newburyportart.org

• Nov./Dec. 2003

NAA Annual Holiday



Get-Together

Friday, Dec. 5, 6-9 p.m.

Come celebrate the holidays with your NAA friends at our annual Holiday Party.

As usual it is potluck, so please bring an appetizer or dish if you will be joining in the festivities.

2003 NAA

Fall Juried Show

Judge's Comments on the Show:

"It was an extreme delight to view over 350 works of art for the Newburyport Art Association's Annual Member's Fall Juried Show. Overall the works were at a very high level of quality, which made the judging process extremely difficult.

I chose to weigh each work individually, upon its own merit, rather than be predisposed toward one particular theme, style, or type of work. Due to space limitations I had to omit of many pieces of good artwork from the show. Less than half of the work originally submitted is exhibited.

There is a productive and healthy competition that exists among and between the member artists, which in turn produces extremely better artists. Consequently, the 2003 Annual Member's Fall Juried Show exhibits the wide bravura of its membership. The works exhibited allow us to view each artist's diligent and painstaking devotion to the craftsmanship of making art in a variety of media. The prize winners were chosen for their outstanding ability to create imagery that pushes their media to an extremely high level of competence and creativity."

— *Dorine Miles Gross, MFA*

Fall Juried Show Awards

Mary Alice Arakelian Memorial Prize for Best of Show, \$125 – Darlene Furbush Ouellett, Portsmouth, NH; *Mary in From the Sun*

H. Patterson Hale, Jr. Memorial Prize for Excellence, \$75 – Katrina Hart, Hamilton; *Island Emerging From Fog*

Institution for Savings Charitable Foundation Prize for General Excellence in Painting, \$50 – Dennis Poirier, Kittery, ME, *Lane's Cove*

Laura Coombs Hills Award for General Excellence in Water-Based Media, \$50 – Charles Shurcliff, Ipswich; *Tidal Marsh #1*

Newburyport Area Industrial Development Charitable Foundation (NAID) Award for General Excellence in Fine Crafts, \$50 – Gary Rathmell, Newton; *Vessel*

Newburyport Bank Award for General Excellence in Printmaking, \$50 – Marc Cote, Newton Upper Falls; *Shepherd & Serpent*

Newburyport Art Supplies and Framing Award for Best Use of Media, \$100 gift certificate – Mary Buerger, New Boston, NH; *Sunday Afternoon Ride*

Honorable Mentions

- Karen Clarke, Newburyport; *Abstract #2*
- Heidi Jackson, Chelmsford; *Fall Cranberry Bog*
- Debra Corbett, Melrose; *Winter Glow*
- Suzanne Brailey, Gloucester; *Sketching at the Met*
- Lindley Briggs, Newburyport; *Winged Lady in the Wave*
- Susan Spellman, Newburyport; *Movement Within*
- Mary Tuttle, Salem; *The Marsh*
- Paul Norwood, Amesbury; *Three Martinis*
- Candy Way, Newbury; *New Beginnings*

www.newburyportart.org

Access information about exhibits, events, classes & workshops, photos of works, and information about individual member artists, poetry readings, etc. Just click to be informed.

Volunteering Can Be Fun!

Our Association is a community of artist members, each here to support each other. A commitment to volunteer 6 hours during the year is not much to give. We need you! If you have a full-time job or live over an hour away, you are not alone. We have many volunteers who work or come from a great distance. If you are exhibiting in the shows, think of all the work that goes into making it happen.

The Art Association's membership, classes, and exhibitions have grown, and so have the tasks. The office staff and chairpersons cannot continue to efficiently service 600 artist members. Our volunteers help to keep our organization strong. How about joining them? The jobs you can volunteer for can be done at the gallery or from home; days, evenings, or weekends. The following is the list of areas we need the most help and can be a lot of fun:

- Gallery Receiving (meet the artists as they bring in their art)
- Jury Support (see how a juror makes selections)
- Show Installation (learn how to hang a show)
- Receptions (host and cater the festivities)
- Gallery Sitting (greet visitors and promote sales of our artwork)

Or fill your resume with these opportunities:

- Exhibition planning
- Membership
- Graphic design
- Office support
- Fund-raising
- Teaching / workshops
- Building
- Newsletter
- Programs & special events
- Web site
- Finance
- Publicity

Contact us at 978-465-8769, before we contact you. We greatly appreciate your time and support.

The Sketch Pad

The Sketch Pad is the newsletter of The Newburyport Art Association, Inc.
65 Water St., PO Box 28
Newburyport, MA 01950
tel.: 978-465-8769
Web: www.newburyportart.org

2003 NAA Board Members

Officers:

Interim President: John Raleigh
Vice President: Bob Currier
Treasurer: Skip Motes
Secretary: Pat Rodrigues

Directors:

At Large: Kerry Callahan
Allan MacGregor
Robert Pyle
John Raleigh
David Saums

Capital Projects: Warren Moskowitz
Corporate

Fundraising: Helen Powell
Education: Sue Spellman
Grants: Carol Hershey
Membership: Vacant
Programs: Vicki Hutcheson
Sketch Pad: Al Moskowitz
Sarah Raleigh

NAA Staff Members

Interim Managing Director: Sue Spellman
Gallery Assistant: Andrea Alukonis
Gallery Assistant: Carol Reynolds
Office Administrator: Joan Merrill
NAA Office Tel.: 978-465-8769
Email: naa@newburyportart.org

Board Meetings are held the first Tuesday of every month at 7 p.m., unless otherwise announced.

Submissions to the Sketch Pad:

Electronic text is preferred – e-mail to: espmosk@juno.com. Mail handwritten or typed submissions to: Al Moskowitz, 12 Charron Dr., Newburyport, MA 01950. *Deadline for submissions is the 15th of the month for the following month's issue.*

NAA Mission Statement: The NAA is a community of artists devoted to supporting, encouraging and motivating all artists. Our mission is to provide: Education in the visual arts for both children and adults; In-house and outreach programs to enhance awareness and appreciation of the Arts; Promotion of artists through exhibition and media exposure; Financial security for our historical association and a building which serves as a place for local artists to promote their art in a community setting.

Corporate Donors

Corporate Patron

Mary Alice Arakelian Foundation
Strem Chemicals, Inc.

Corporate Benefactors

H. Paterson Hale, Jr. Charitable Foundation
Institution for Savings Charitable Foundation

Corporate Sponsors

Newburyport Five Cents Savings Bank
Newburyport Civic League
MAST Industries, Inc.
IBM Corporation
Downey Shea, Rowley
Ready Mix, Inc. (in-kind)

Corporate Donors

Robert Currier, Municipal Advisory Services (in-kind)
Edward G. Molin Charitable Foundation
Osram Sylvania

Contributing Donors

First and Ocean National Bank
The Walsingham Gallery
Woodman Associates Architects
Zip Type Service (in kind)

Business Partners

Annie's
Art and Camera (in kind)
Artist Playground
Mark Brophy (in-kind)
Child at Heart Gallery
French Lessons
Leary's Fine Wines and Spirits
Lepore Fine Arts
Linda A. Miller, Architect
Lunt & Kelly's ServiStar
Newbury Engineering
Newburyport Press, Inc.
Newburyport Art Supplies and Framing
Pressmasters, Inc.
Raleigh Design (in-kind)
Salt Marsh Frameworks and Gallery
Sports and Therapeutic Massage

Help Keep Us Up-to-Date!

The NAA office needs to be informed of any current or upcoming changes in your e-mail, postal address, or tel. number – so that we can continue to keep YOU informed of important NAA events and information. Call 978-465-8769 or e-mail your changes to: naa@newburyportart.org. Thank you!

Membership Renewal

A reminder for dues 2004 will be sent out December 1st. The \$35 Artist membership fee will remain the same. The Artist Plus Membership, which offers a link to your web site and has no entry fees, has increased from \$100 to \$120 for the 2004 year.

Sketch Pad Deadline

If you have an item for the *Sketch Pad*, the deadline is the 15th of the month prior to publication. If possible, send your submissions by e-mail so they needn't be re-typed.

Sketch Pad Advertising Rates

For a 2.35" x 3.65" ad, camera ready, for 3 issues (6 months), the rate is \$50. Electronic files are also accepted. Please send \$50 payment by check or credit card to the NAA office.

What Did You See?

Some of us, I've been told, venture out into the rest of the world on occasion. Well, we would like to hear about it. For instance, if you visited a museum, gallery or place that you found worth talking about to others, let us know. If your item can be put into the *Sketch Pad*, and it meets the deadline for a particular issue, we'll print it. If you have an accompanying photo, send that too. Please send it by e-mail to Al Moskowitz, espmosk@juno.com.

Ongoing Workshops

Figure Drawing Workshop

Every Wed. night, 7-9:30 p.m.

No instruction. Contact

Gordon Pryzbyla, 978-465-5721.

Cost: \$6 per session for members/
\$8 per session, non members.

Sculpture Workshop

Six-week session of the sculpture workshop.

Thursdays from 7-9:30 p.m. All levels of

experience, from beginners to the

advanced, are welcome. All work is done

in clay from live models. There is no

instruction. Prior registration is necessary

because of limited enrollment. Call Diane

McLeod-Packer, 978 388-3545 for informa-

tion and registration. The fee for the six

sessions is \$50 for NAA members and \$60

for non-members.

Please Note: There will be no drawing workshop on Wed., Nov. 12, and no sculpture workshop on Thurs., Nov. 13. These workshops will continue as usual after these dates.

Interest Groups

Abstract & Experimental Painters

2nd Tues. of the month, 7-9 p.m.

Contact: Sharon Dahn, 978-465-6310

Photography Interest Group

2nd Mon. of the month, 7:15-9 p.m.

Contact: Jay McCarthy, 978-499-9009

Powow River Poets Poetry Readings

Selected Wednesdays, 7:30-9 p.m.

Contact: Rhina Espallat, 978-462-9144,

email: espmosk@juno.com

Printmaking Group

3rd Tuesday of the month Contact: Susan

Jaworski-Stranc, email: stranc@attbi.com

KUDOS!

Barbara Barclay of Salem, N.H., has been juried into the North Shore Art Association as a full artist member.

Rhina Espailat was one of 13 poets invited to read her work at the National Book Festival, Washington D.C., on October 4. This was the first year that a tent pavilion was set up on the Mall specifically for poetry. She and the other 79 writers participating were honored with a black tie dinner at the Library of Congress and breakfast at the White House.

Vicki Hutcheson won third place out of hundreds of entrees at the Topsfield Fair Art Show in October. She received a ribbon for her pen and ink illustration.

John Raleigh is showing his color pinhole photography at the Firehouse Center for the Arts in Newburyport from October 21st through November 17th, 2003.

Sarah & John Raleigh are currently showing a selection of their color photographs of Italy, at David's Tavern, 11 Brown Square, Newburyport, MA.

David Saums won first place in the Professional Photography category at the 2003 Topsfield Fair Art Show.

Photo Interest Group

At the Sept. meeting, Mon. the 8th, the group welcomed "new" members Dan Moriarty, Scott Spaulding, Frank Molinski & Harry Taplin. Ideas for future meetings were discussed: a "Fall Foliage Photo Expedition" and a model/figure study photo shoot. Contact <jay_mccarthy_306tfs@hotmail.com> if you are interested in participating. Before the meeting concluded, Pat Bashford, Jay Foley, Marianne Young, Jay McCarthy, John Raleigh & Frank Molinski presented their photos for group critique (all beginning with the letter "C").

The October meeting of the Photo Interest Group was held on Mon., Oct. 13. Turnout was light, but the discussion points were interesting. The group welcomed new attendees Paul Mozell & Bonnie Lake, after which group critique of photos beginning with the letter "D" took place. Subject matter ranged from doorknobs & doorways to dishes to; well, you get the picture.

The next meeting of the group will take place on Mon., Nov. 10, at 7:15 p.m. at the NAA. Plans are for a guest speaker and group critique of photos beginning with the letter "E". For further information call Jay McCarthy at 978-499-9009.

F • Y • I

- Exhibitions at the Addison Gallery of American Art, Andover, MA:
 - *Fred Wilson: Objects and Installations, 1979-2000*; through Nov.9, '03.
 - *Richard Serra Prints: A Survey*; Nov. 25, '03 - March 29, '04
 - *Stephen Greene: Painter and Mentor*; through Jan. 4, '04.
 - *Chance Encounters: Selected Works from the Addison Collection*; through Nov. 30, '03.
- *Vanished Kingdoms: The Wulsin Photographs of Tibet, China & Mongolia 1921-1925*, at the Peabody Essex Museum, Salem, MA; through Feb. 29, '04.

The Life and Artistry of Jan Vermeer – Art historian Gershon Weisenberg will present a slide lecture on the Dutch master of light and color on Sun., Nov. 9 at 2 p.m. in the Newburyport Public Library's program room. Co-sponsored by the NAA. Free.

Fall Classes Still Open!

Stained Glass Mosaic Workshop for Children and Adults

Instructor: Leslie Doherty — Create a stained glass mosaic tile trivet or planter from start to finish. Tools and all glass supplies are included in class fee. Please bring safety goggles if you do not wear glasses. Open to children under 9 with accompaniment by an adult.
Sat., Nov. 22, 10 am - 1 pm; \$40 members, \$45 non-members

Yupo Paper Excitement! Instructor: Dustan Knight —

The Latest Star Material of the Watercolor Exhibition Circuit. Experiment with this fabulous synthetic paper. Techniques – puddling and lifting are demonstrated. So come on and give it a try. Paper is included in the workshop fee. Call instructor for material list.
Sun., Nov. 16, 10 am - 4 pm, \$50

Writing and Publishing Workshop: "Your Work to the World"

Instructor: Ainé Greaney — Writing in the Attic? Scribbling under the bedclothes? Learn how to prepare, send and re-send your work to literary and mainstream magazines. Also some instruction on getting a literary agent.
Sat., Nov. 8, 9 -12 noon; \$50 members, \$55 non-members

Clothed Figure Drawing

(live model) Work in your own media from a clothed model. No instruction. Ongoing 6 wk. workshop.

Thurs. mornings, 9-11:30 a.m. Oct. 30 - Dec. 11
(no class Nov. 27) \$40 members, \$45 non-members

Still Life Workshop

Open studio, work in your own medium from still life set-up. Call NAA office if interested. Ongoing 6-week workshop. **Tues. mornings, 9-12.**
\$6 per session for members / \$8 per session non-members

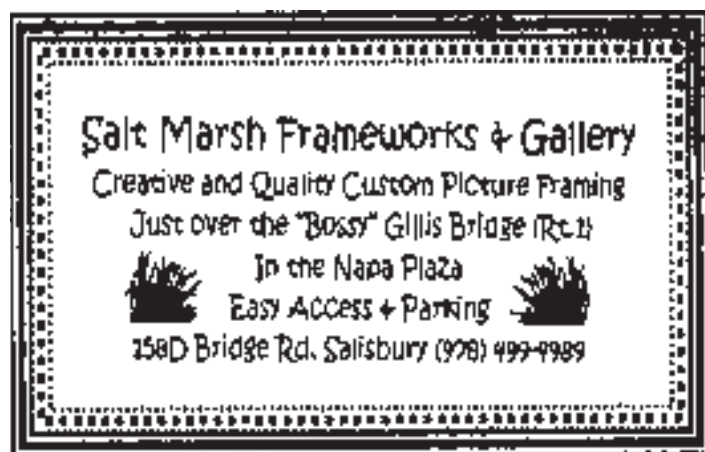
Election Notice

On Tuesday, January 13, 7 p.m., the annual membership meeting will be held to elect officers and board members. As reported in the last issue of the *Sketch Pad*, the date of our annual meeting has been changed by the board, from October to January.

What Do You Know?

Almost all artists have techniques or ideas that they use in their work which others may not know about. If you would like to share these with fellow members through a written or photographic description, or if you would like to demonstrate them, let us know.

– Al Moskowitz



Portrait Artists

Do you want to publicize your portrait art (people, animals, houses)? The NAA will present 4 pages in our portrait book: a bio, resume & color examples of your portraits (please omit tel., email, website). The book is on display in the Gallery for visitors to look through. When prospective buyers inquire about commissioning a portrait by you, NAA will send you the referral notice & provide you with their phone number and a brief description of what they would like to have done. A 20% referral fee to NAA is required on sales made through the Gallery.

True Value.
TAYLOR RENTAL

**LUNT & KELLY'S
HOME CENTER**

**KELLY'S
TAYLOR RENTAL**

161-163 State Street
Newburyport, MA 01950
Phone: 978-465-6650
Fax: 978-499-8766

Atlantis Art Charters



*Make the Atlantis
your on-the-water studio.*

Paint, Draw and Photograph
from a different perspective.

tel. 978-463-7765

e-mail: atlantis.ma.ultranet@rcn.com
web: www.ultranet.com/~atlantis

6th Annual Members' Photography and Sculpture Show

Aug. 22 - Sept. 16, 2003

Photography Judge: Blake Fitch, Executive Director of the Griffin Museum of Photography, Winchester, MA

Sculpture Judge: Robert Kephart, sculptor with a Master of Fine Arts from the School of the Art Institute of Chicago, IL

Photography Awards

Judge's Comments (Blake Fitch):

"I found this show to be very strong overall. It improves every year and was very difficult to edit. There were several images I wanted to take home because I liked them so much. What a pleasure it was to spend a morning among such great work."

Mary Alice

Arakelian Award/Best of Show, \$100

– Frank Molinski, Gloucester, MA; *Chicago - One*; b&w print

Newburyport Art Supply Award for

Portraits, \$100 gift certificate – Nancy Wiatt, York, ME; *Abdulah*; Selenium-toned gelatin silver print

The Institution for Savings Award for excellence in b&w photography, \$50

– Gail Giarrusso, Marblehead, MA; *Maine Trees*; b&w print

H. Patterson Hale, Jr. Award for Excellence in Color Photography, \$50

– Carol Hershey, Newburyport, MA; *Asian Girl*; color print

The Newburyport Five Cents Savings Bank Award for Excellence in Digitally Printed Photography, \$50 – Julieanne Ring, Andover, MA; *Big Bubble Theory*, Iris Giclée

Judge's Award, \$50

– Robert Currier, Newburyport, MA; *Interior Metallic Wall of the George Pompidou Center*; b&w selenium-toned print

Award for Excellence for Hand-colored or Transfer Image, \$50

– Lon & Janey Sherman, Amesbury, MA; *Umbrellas – Florence, Italy*; handcolored b&w print

Judge's Award, \$25 from Infocus

Photographic Laboratories at the Tannery – Robert Pyle, Reading, MA; *Three Windows – Fort Warren, Boston Harbor*; b&w, selenium-toned print

Honorable Mentions:

• M. P. Young, Portsmouth, MA; *Three Tulips*; digital print • Isa Leshko, Salem, MA; *Car Wash Series #4*; b&w, selenium-toned print • Gail Handelmann, Marblehead, MA, *Florida Window*; inkjet print • Robert Streeter, Rockport, MA; *Lifeburst*; b&w print • W. Thomas Hotz, Newburyport, MA; *Slick Chick*; b&w print • William Tangorra, Newburyport, MA; *Via di South Vincenzo, Rome*; C-print • Jonathan Richard, Haverhill, MA; *Stardust*; Pegasus print



Sculpture Awards

Best of Sculpture – Susan Kapuscinski Gaylord, Newburyport, MA; *Mahayana Meditation II*; Sculpture/mixed media

Awards for Sculptural Achievement:

• David Rossetti, Rowley; *Whale Ship*; Copper & assorted hard woods
• Dolores Erikson Reid, Wenham; *Madonna & Child*; Raspberry Alabaster
• Andrea Alukonis, Newburyport; *Hide and Seek*; Cherry • Glenn Szegedy, Lowell; *Sam and Dave*; Bronze

Annual Program Guide

This coming year, NAA will be implementing a new publication, an Annual Program Guide which will be available throughout the year for free at NAA. Within it will be a calendar of events for the year, information about the NAA, its history, programs & special events. We are also including "Artist Pages" wherein an artist may take full page (5" X 8") a half page (5" X 4") or quarter page (2½" x 4") to display an image of their work & artist information. Ads will also be solicited from the greater community. We will be sending additional information to our membership on this new way to promote yourself and your art!

This booklet will also be used at the NAA Annual Auction. Please give this some consideration. It will promote your art as well as the NAA's programs and services.

To Be or Not to Be?

Unlike Hamlet, we are not indecisive about what we have done or what we have to do. The question is what we, as members, will do to sustain our galleries, our programs, our staff and our buildings – and enlarge these things to accommodate the needs of our ever-growing membership.

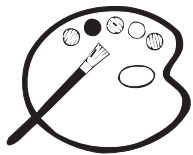
In the eyes of our membership and the community we have become an important regional institution. Each year we fulfill our members' exhibition needs to a larger extent than most art associations. To the community, we have grown to be a place where hundreds of residents and thousands of visitors enjoy the visual and literary arts and partake of our educational programs.

So, what's the problem? The fact is, no similar institution, including ours, is self-sustaining. It's that simple. Other non-profits have endowments or commercial ventures to keep them going. We have neither.

To get to the point, we need your help. Our Annual Appeal must bring in sufficient funds. You should have recently received the NAA Annual Appeal. Please do what you can by sending in a thoughtful gift. Your support will make a difference!

"To be or not to be" is not an option.

—Al Moskowitz, Board Member & Editor



NAA Interest Groups

While most members are aware of the variety

of Interest Groups that the NAA fosters, others may have missed that fact. Presently, we boast four such groups that are very active and have attracted many members. Some have matured to the point where they mount their own shows at our galleries. You are invited to join any of them and participate in their meetings and activities. There is no fee for doing so.

Also, if you feel that your interest is in another direction, and you along with other members, would like to form a group around that interest, please contact the NAA office for information.

NAA Calendar of Events, 2003-2004

NAA Galleries

Sargent Gallery: Main first floor gallery.

Hartson Gallery: Second floor, for exhibitions & classes.

Laura Coombs Hills Gallery:

New first floor annex to Sargent Gallery with separate entrance.

Gallery Hours: Mon. - Sat., 11 am - 5 pm & 12 pm - 5 pm on Sun. unless otherwise noted. Exhibitions, receptions, gallery lectures, poetry readings and interest groups are open and free to the public, unless otherwise noted.

Winter Schedule: Jan. - March, 2004 – closed Mondays

NAA Member Shows

Oct. 25 - Nov. 11, 2003 –

Autumnal Equinox *Open Members' Show*

Receiving: Thurs., Oct. 23, 10 am - 5 pm

Reception: Sun., Oct. 26, 3 - 5 pm

Pick up work: Sun., Nov. 9, 12 - 5 pm

Nov. 18 - Dec. 27, 2003 – Holiday Show

All Media

Receiving: Nov. 14 - 18, 10 am - 5 pm & 12 - 4 pm on Sunday

Installation: Sun., Nov. 16, 10 am - 3 pm

Reception 1: "Holiday Party at NAA"

Fri., Dec. 5, 6 - 9 pm (Coincides with Newburyport Invitation Night, Dec. 5, 7 - 9 pm)

Reception 2: Invitation Night Open House, Dec. 12, 7 - 9 pm

Jan. 16 - Feb. 14, 2004 — Annual Members' Winter Juried Show, Part I:

Pastel, Drawing Printmaking, Photography, Digital Art, Fine Crafts

• Sargent & Hartson Galleries

Receiving: Sun., Jan. 11, noon - 5 pm & Mon., Jan. 12, 2 - 8 pm

Pick up work not accepted: Fri., Jan. 16, 11 am - 5 pm & Sat., Jan. 17, 11 am - 5 pm

Reception: Sun., Jan. 18, 3 - 5 pm

Awards at 3:45 p.m.

Pick up work accepted: Sat., Feb. 15, 4 - 5 pm & Mon., Feb. 16, 11 am - 2 pm

Feb. 20 - March 21, 2004 — Annual Members' Winter Juried Show, Part II: Watercolor, Oil, Acrylic, Mixed Media, Sculpture

• Sargent & Hartson Galleries

Receiving: Mon., Feb. 16, 2 - 8 pm

Pick-up work not accepted: Fri., Feb. 20, 11 am - 5 pm & Sat., Feb. 21, 11 am - 5 pm

Reception: Sun., Feb. 22, 3 - 5 pm

Awards at 3:45 pm

Pick up work accepted: Sun., March 21, 4 - 7 pm & Mon., March 22, 10 am - 2 pm

Featured Artists Series

Feb. 12 - 25 – Julie Airoidi

Oil Paintings

Laura Coombs Hills Gallery

Reception: TBA

2003 Newburyport Gallery Walks

Newburyport Galleries, 5 - 8 pm

• November 15

• December 20

2003 Newburyport Invitation Nights

• December 5, 7 - 9 pm

• December 12, 7 - 9 pm

Invitation Night Open House at the

NAA: Dec. 12, 7 - 9 pm

• December 20, 7 - 9 pm

Powow River Poets

Poetry Readings

Laura Coombs Hills Gallery, NAA

Wednesdays, 7:30 pm

• November 19, 2003

• January 21, 2004

• February 18, 2004

Important Corrections:

In the last issue of the *Sketch Pad* the calendar had the pick-up date for the Autumnal Equinox show as Nov. 11. It should be Sunday, Nov. 9.

Also, the time for the NAA Annual Holiday Party is 6-9 pm, not 3-5 pm, on Friday Dec. 5.



Newburyport Art Association, Inc.
65 Water Street / PO Box 28
Newburyport, MA 01950

NON-PROFIT ORG
US POSTAGE PAID
NEWBURYPORT MA
01950
PERMIT NO 176

Dated Material – November 2003

Upcoming NAA Shows
Nov. 18 - Dec. 27, 2003
Holiday Show
works of art and fine crafts for sale
Jan. 16 - Feb. 14, 2004
Annual Members' Winter Juried Show
Part I

NAA is a non-profit organization.

Reproduction & Promotion of Your Artwork



Graphic Design . Photography . Illustration

978.465.9471 or 978.465.3290
www.raleighdesign.us
Newburyport, MA



Ask about our Special Rates for NAA Members!

Postcards, Ads, Posters, Websites • Photography, Scanning & Custom Archival Printing



NEWBURYPORT
ART SUPPLIES
and FRAMING

Finest Quality Art Supplies
Custom Framing
Professional conservation quality framing

NAA Members, show your NAA card for 10% discount!
 (Not valid with other discounts or sale items.)

3 Graf Rd. Unit 10 Newburyport, MA 01950
978-462-0773

Gift Shop Art

Occasionally, artwork will be rotated out of the gift shop to vary and balance different media (space considered), including items that have been in the Gift shop for some time.



Any of the office staff can check your sales for you or let you know if your work has been moved to storage. If you would like to take your art to display in another venue we must record that you have taken it. To have your work juried for the Gift Shop, or to replace sold pieces, they must be presented with a list of the items, description, and price. The work will be secured, reviewed and you will be notified as to whether or not your work has been selected. It will be processed as soon as possible, recorded, and labeled if accepted for display.

Suggestions if you are submitting your art work to the Gift Shop for the first time: 8 pieces or 12 cards can be submitted for review. Think small! Space is limited: 11" x 14" or under for framed work, 16" x 20" or under for shrink-wrapped work. White mats and very, very simple frames show off your work best and increase your potential for sales. Wire to hang, no standing frames, priced to sell (nothing over \$200). Take a look at the prices of items in the Gift Shop to get ideas. We are always looking for variety. Please contact us if you make jewelry.