

# The Sketch Pad

The Newburyport Art Association Member Newsletter • www.newburyportart.org • Jan./Feb. 2002

## On a Personal Note

First, I wish all our members a happy new year. I also want to express my appreciation for the leadership of the past presidents with whom I have worked as vice president over the last ten years. The cumulative effort and devotion of past presidents John Raleigh, Margette Leanna, Susan Spellman and Skip Motes have all helped bring the NAA to where it is today. Of course, without the work of dozens of board directors and individual members little would have been accomplished. In the past three years we have seen a transformation and phenomenal growth of the NAA under Skip's vision and leadership. In these three years we have had the introduction of an excellent paid staff, an exceptional growth in membership, expansion of educational programs, expansion of the board, increased participation of members on committees, renovations of the gallery and studio, plans for the acquiring of an annex, etc.

My hope, as I become president this year, is to have the ability to help sustain the progress made so far. My task as president will be much lighter, though, with Skip as Vice President in Charge of Operations, and our Board of Directors and staff in place led by our Gallery Director, Elaine Lansky.

— Al Moskowitz

## Dues and To Do for 2002

The billing for your NAA 2002 membership dues will be out in late December. A special membership table will also be set up at Winter Show receiving for your convenience (please make out a separate check for your dues). There will be a form sent to you asking for an artist profile update, your interests, and volunteer activities. Please update and make any changes and return it with your dues payment.

— Marge Motes, Membership Director

## The NAA Holiday Show

Our gallery has never been so filled with art work and crafts as it has been this past holiday season. Nor has there been as many visitors to the gallery – and sales. Many thanks to those who received the work, hung the show, worked the hospitality during the show and brought food to feed the hungry masses of Newburyport seeking art.

## Gallery Talks at NAA

### ***Tax Seminar for Artists***

*By Peter Jason Riley, CPA, Riley & Associates, Newburyport*

**Wednesday, January 23rd, at 7 p.m.** (snow date: Wednesday, January 30 at 7 p.m.)

Peter is the author of the new book: *The New Tax Guide for Artists of Every Persuasion*, and has also published articles on taxes for artists in *Art Calendar Magazine*.

Artists and taxes don't seem to mix very well. Taxes and administrating the business of art are often last on the list of concerns for the visual artist. This seminar will help you, as an artist, with such questions as: When can I start writing off my art expenses? When does my art become taxed? What kinds of things can I deduct? What about writing off the home studio? Can I deduct travel expenses?

Wine and cheese reception will follow the seminar.

Open to all members and the public. Contributions are welcome.

### ***A Brush with Friends***

*By Jay Williamson, Curator of the Historical Society of Old Newbury*

**Winter Show - Part I**

**Sunday, February 3rd at 3 p.m.**

19th century artistic proteges emerged from the merchant families of Newburyport's genteel society. This lecture "A Brush with Friends" will discuss a number of local artists such as John and Agnes Appleton Brown, Laura Coombs Hills and Ethel Reed, who achieved repute for their work in Boston, New York, and abroad. A slide presentation that will accompany the discussion will highlight works of these local artists who drew upon local vistas for their subjects. Although there was not a formal "Art Association" then, there was an active group who, at the time, painted and socialized together.

Wine and cheese reception will follow the talk.

### ***Commercial Applications of Sculpture***

*By Jeffrey Briggs*

**Winter Show - Part II**

**Sunday, March 3rd at 3 p.m.**

Jeffrey Briggs, sculptor of Briggs Design and winner of the Amesbury Commission Award for 2002, will be the speaker. He works in wood, clay, plaster, resin and paper maché. He will discuss how his projects evolve from the initial idea through the development of drawing, sculpting and casting, to the finished work.

Wine and cheese reception to follow the talk.

### ***In-Depth History of Newburyport Photographers, c.1840-1915***

*By Chris Snow*

**Sunday, March 10th at 3 p.m.**

Chris Snow, of Snow Antiques and a longtime local resident, is an appraiser, auctioneer and collector specializing in antiques of the local area. Chris will give a slide presentation from his private collection and a talk on the photographers of the Newburyport area spanning 75 years.

Wine and cheese reception to follow the talk.

All Gallery Talks are free and open to the public (donations gratefully accepted). Call NAA for more information at 978-465-8769.

## The Photography Group



Rick Hydren

The November PHIG meeting welcomed two new members to this nearly 100-member group: Jay McCarthy and John Geesink. Rave reviews were received of the Peabody Essex Museum Curtis show and somewhat less so for the current MFA fashion

foto show. During the second half of the meeting, Rick Hydren gave a strong marketing presentation with emphasis on targeting and pricing – it's essential to be realistic, especially in the current market!

At the December meeting at the Motes's house, Eric Smith enlightened the PHIG with a slide presentation on night-time, time lapse and special effects photography. He showed slides of nights in the city, sky views of the moon and stars, decorative holiday lights on houses at night, etc. The

potluck buffet and socializing after the meeting ended the year on a very pleasant note.

The next meeting is scheduled for Monday, January 14, 7 p.m., at the NAA. This may be subject to change. For further details contact Helen Powell, email: [hpowell@iopener.net](mailto:hpowell@iopener.net).



illustration by Sue Spellman

## In Memoriam

Alice E. Frantz died this past fall in Topeka, Kansas. She and her former husband, D. Dale Schoepflin, helped found the Newburyport Art Association. He was the 10th president of the NAA in the 23rd year of the NAA. Ms. Frantz also owned an art gallery on Middle Street, Newburyport, for several years, and sang in barbershop choral groups here and in Kansas.

## The Sketch Pad

The Sketch Pad is the newsletter of The Newburyport Art Association, Inc., 65 Water Street / PO Box 28 / Newburyport, MA 01950 tel. (978) 465-8769 Web: [www.newburyportart.org](http://www.newburyportart.org)

### 2001 NEWBURYPORT ART ASSOCIATION BOARD MEMBERS

#### Officers

<b>President:</b>	Al Moskowitz	978-462-9144	<a href="mailto:espmosk@juno.com">espmosk@juno.com</a>
<b>Vice President in Charge of Operations</b>	Skip Motes	978-463-3374	<a href="mailto:skipmotes@mediaone.net">skipmotes@mediaone.net</a>
<b>Treasurer:</b>	Skip Motes		
<b>Secretary:</b>	Marge Recke	978-465-1292	

#### Directors

<b>Capital:</b>	Warren Moskowitz	978-462-9144	<a href="mailto:warren.moskowitz@sylvania.com">warren.moskowitz@sylvania.com</a>
<b>Corporate Fund Raising:</b>	Helen Powell	978-465-1535	<a href="mailto:hpowell@iopener.net">hpowell@iopener.net</a>
<b>Development/at Large:</b>	Bob Currier	978-465-1958	<a href="mailto:rbcurrier@aol.com">rbcurrier@aol.com</a>
<b>Director at Large:</b>	John Raleigh	978-465-3290	<a href="mailto:jraleigh@mediaone.net">jraleigh@mediaone.net</a>
<b>Education/Programs:</b>	Susan Spellman	978-465-3536	<a href="mailto:suespellman@mediaone.net">suespellman@mediaone.net</a>
<b>Exhibitions:</b>	Lindley Briggs	978-465-5593	<a href="mailto:briggs@shore.net">briggs@shore.net</a>
	Kerin Foley	978-682-1978	<a href="mailto:kerin@creativist.com">kerin@creativist.com</a>
	Bud Smith	978-374-4566	<a href="mailto:budnverna@rcn.com">budnverna@rcn.com</a>
<b>Grants:</b>	Carol Hershey	978-463-3761	<a href="mailto:carol_s_hershey@aoncons.com">carol_s_hershey@aoncons.com</a>
<b>Marketing:</b>	David Saums	978-388-0448	<a href="mailto:dsaums@email.msn.com">dsaums@email.msn.com</a>
<b>Membership:</b>	Marge Motes	978-463-3374	<a href="mailto:margemotes@prodigy.net">margemotes@prodigy.net</a>

### NEWBURYPORT ART ASSOCIATION STAFF MEMBERS

**Gallery Director:** Elaine Lansky, 978-462-4116, [naa@newburyportart.org](mailto:naa@newburyportart.org) **Gallery Assistant:** Andrea Alukonis  
**Office Administrator:** Joan Merrill **Promotion & Publicity Manager:** Barbara Mattina

**Board Meetings** will be held the first Tuesday of every month at 7 p.m., unless otherwise announced.

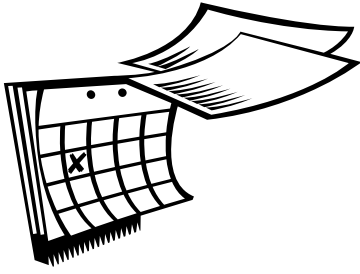
**Items for the SketchPad:** We prefer electronic text, although handwritten submissions are also accepted. E-mail to: Al Moskowitz: [espmosk@juno.com](mailto:espmosk@juno.com) / mail: 12 Charron Drive, Newburyport, MA 01950 / or fax to: S. Raleigh at: 978-463-5246. **Deadline for submissions is 15th of the month for following month's issue.**  
**SketchPad Co-Editors:** Al Moskowitz (text), 978-462-9144 and Sarah Raleigh (layout/design), 978-465-9471.

**NAA Mission Statement:** The NAA is a community of artists devoted to supporting, encouraging and motivating all artists. Our mission is to provide: Education in the visual arts for both children and adults; In-house and outreach programs to enhance awareness and appreciation of the Arts; Promotion of artists through exhibition and media exposure; Financial security for our historical association and a building which serves as a place for local artists to promote their art in a community setting.

## KUDOS!

- \* Patricia Bashford had a solo exhibit at Hyperbole Gallery on Pleasant St. from mid-September to mid-October. Called "Different Starting Points," the photos, both black & white, and color, covered several cultures around the world.
- \* Jeff Briggs' design for a public sculpture showing the transition from the carriage to the automobile industry in Amesbury, won in a competition sponsored by the Cultural Council. (see photo this issue)
- \* Lindley Briggs exhibited her small sculptures at the NOBO Show at Fox Brothers Studio in December.
- \* Claire Connelly had an Open Studio show in Manchester, NH.
- \* Rhina P. Espailat's new book of poetry, "Rehearsing Absence," which won the Richard Wilbur Award, became available in bookstores and the NAA Gift Shop, in December.
- \* Lance Hidy, graphic designer and judge of the NAA Fall Show (who joined the NAA after the show), designed the U.S. 34-cent Postage Stamp – "Mentoring A Child." The stamp will be released in January during National Mentoring Month. (see photo this issue)
- \* Elaine Lansky had her work juried into a show at the Brookline Arts Center's Crafts Showcase 2001, in November and December.
- \* Margette Leanna won 2nd Prize at the Bar Harbor Chamber of Commerce Fall Art Show in September. She also had eight small paintings in the Holiday Show at Elements Gallery in Rockland, Maine, Nov. 30 to Dec. 31.
- \* Mary Mogan Pacheco and Susan Burton have work in the Hall Haskell House, in Ipswich, over the Holidays.
- \* Silvana Siudut and Lillian Coolidge have a show: "Two Visions: One Passion," at the Chelmsford Public Library, November 5 - December 21.
- \* Laura Stover was awarded first place in the portrait category and honorable mention in the oils and acrylic category for her painting, "Kati," out of almost 700 entries at the Annual International Exhibition of Fine Arts Miniatures at the Miniature Painters, Sculptors and Gravers Society, Washington, D.C. She also won Best-in-Show at recent Professional Art Exhibit at the Topsfield Fair for her oil painting, "A Collection of Treasures."
- \* Tom Svirsky was awarded Best-in-Show at the Wildlife Artisans Competition in Topsfield, for his fish painting, "Mussel Bed Stripers."

If you have any news about your awards or exhibits that you want in this column, please send it to Al Moskowitz, [espmosk@juno.com](mailto:espmosk@juno.com), or to the NAA gallery.



## NAA Interest Groups

### **Abstract and Experimental Painters**

2nd Tuesday of the month, 7 - 9 p.m.  
Contact: Sharon Dahn, 978-465-6310

### **Photography Interest Group**

2nd Monday of the month,  
7:15 - 9 p.m. Contact:  
Helen Powell, 978-465-1535,  
email: hpowell@iopener.net

### **Watercolor Interest Group**

3rd Monday of the month, 7:15 -  
9 p.m. (will resume in the spring)  
Contact: Marie Crone, 603-378-0609

### **Nbpt. H.S. Poetry Soup (for High School students)**

1st Wednesday of the month,  
7 - 9 p.m. Contact: Debbie Szabo,  
email: dszabo@massed.net

### **Plein Air Group**

Weekly outdoor painting gathering.  
No instruction. Contact:  
Carol Reynolds, email:  
reynoldsart@yahoo.com

## NAA Workshops

### **Figure Drawing (live model)**

Every Wednesday night, 7 - 9:30 p.m.  
No instruction. Contact Gordon  
Przybyla, 978-465-5721

### **Sculpture (live model)**

Every Thursday night, 7 - 9:30 p.m.  
No instruction. Contact:  
Al Moskowitz, 978-462-9144,  
email: espmosk@juno.com

## NAA Exhibition & Events Calendar, Jan.-June, 2002

### **Powow River Poets Reading**

Wed., Jan. 16 at 7:30 p.m.

### **NAA Winter Juried Show, Part I**

*Painting, watercolor, pastel,  
mixed media, fine crafts*

**January 18 - February 16**

**Juror:** Jennifer Moses

**Receiving:** Sun., Jan. 13, 12 - 4 p.m.

& Mon., Jan. 14, 10 a.m. - 5 p.m.

*Please note:* No wall hanging larger  
than 40"w x 60"h

**Reception:** Sunday, Jan. 20, 3 - 5 p.m.;

Awards at 3:45 p.m.

**Pick up work not accepted:** Friday,  
Jan. 18, 11 a.m. - 5 p.m.

**Pick up work accepted:** Saturday,  
Feb. 16, 12 - 5 p.m.

### **Powow River Poets Reading**

Wed., Feb. 27 at 7:30 p.m.

### **NAA Winter Juried Show, Part II**

*Drawing, printmaking, photography,  
sculpture*

**February 22 - March 20**

**Juror:** Christopher Gowell and  
Sarah Malakoff

**Receiving:** Sunday, Feb. 17, 12 - 4 p.m.

& Monday, Feb. 18, 10 a.m. - 5 p.m.

*Please note:* No wall hanging larger  
than 40"w x 60"h

**Reception:** Sunday, Feb. 24, 3 - 5 p.m.;

Awards at 3:45 p.m.

**Pick up work not accepted:** Friday,

Feb. 22, 1 - 5 p.m.

**Pick up work accepted:** Wednesday,  
March 20, 12 - 5 p.m.

### **Powow River Poets Reading**

Wed., March 20 at 7:30 p.m.

### **4th Annual Budding Artist Show:**

**Art of Regional Middle & H.S. Students**  
**March 23 - April 10**

**Receiving:** Thursday, March 21, 3 - 7 p.m.

**Reception:** Sunday, March 24, 3 - 5 p.m.;

Awards at 3:45 p.m.

**Pick up work:** Wednesday, April 10,  
3 - 6 p.m., April 13, 11 a.m. - 5 p.m.

### **Powow River Poets Reading**

Wed., April 17 at 7:30 p.m.

### **Human Form Show**

*Open Show for All Media*

**April 13 - May 1**

**Receiving:** Thursday, April 11,  
10 a.m. - 7 p.m.

**Reception:** Saturday, April 13, 7 - 9 p.m.

**Pick up work:** Wednesday, May 1,  
12 a.m. - 5 p.m.

**Salon des Refusés: Art which has  
been refused from any juried show.**

*Awards by popular vote in all media.*

**May 4 - 14**

**Receiving:** Thursday, May 2,  
10 a.m. - 7 p.m.

**Reception:** Saturday, May 4, 7 - 9 p.m.

**Pick up work:** Tuesday, May 14,  
11 a.m. - 5 p.m.

**Discussions on jurying process:** (TBA)

### **NAA Poetry Contest Awards**

Sunday, May 19 at 5 p.m.

### **NAA Auction**

**May 16 - 22**

**Preview:** Thursday, May 16, 11 a.m. -  
5 p.m. & Friday, May 17, 11 a.m. - 5 p.m.

**Auction:** Saturday, May 18

**Pick up work:** Sunday, May 19,  
11 a.m. - 4 p.m. & Mon. - Wed., May 20 -  
22, 11 a.m. - 5 p.m.

### **Featured Artist Series**

**May 23 - 29**

Laura Coombs Hills Gallery -

**Photography:** John & Sarah Raleigh

Sargent Gallery - **Photography:**

David Saums

### **5th Annual Regional Juried Art Show**

**June 8 - July 9**

**Receiving:** Saturday, June 1, 10 a.m. -  
4 p.m. and Sunday, June 2, 12 - 5 p.m.

**Reception:** Saturday, June 8, 7 - 9 p.m.;

Awards at 7:45 p.m.

**Pickup work not accepted:**

Friday, June 7, 11a.m. - 5 p.m.

**Pick up work accepted:** Tuesday, July 9,  
4 p.m. - 7 p.m. & Wednesday, July 10,  
11 a.m. - 5 p.m.

### **Powow River Poets Reading**

Wed., June 19 at 7:30 p.m.

# NAA Class and Workshop Schedule — Winter 2002

## **For Children**

### **The Great Clay Adventure**

*Instructor: Shaune McCarthy-Charlé*

Creative hand building for young artists. Using water-based clay, students will learn techniques for making sculpture. The fundamentals such as coil, pinch, hollowing, carving, and slab building will be covered as well as more advanced techniques for making animals, masks, people, and bas-relief.

**Age:** grades 3-7

**Date/Time:** Jan. 24-March 22, Thursdays 3:30-5 p.m.

**Cost:** \$110 includes firing, clay glaze and tools

### **Look-See-Draw: Drawing for Children**

*Instructor: Michelle Mintz*

Using colored pencils, pastel and charcoal, Michelle teaches students how to look, see and draw. Michelle also teaches about light, dark, and shadow. Set ups and instruction are geared toward individual age groups.

**Age:** grades 3-8

**Date/Time:** Jan. 23 - March 6, Wednesdays 3:30-5 p.m.

**Cost:** \$40 members / \$45 non-members

## **For Adults**

### **Clothed Figure Drawing Workshop**

*with Sue Simon*

A clothed model will be provided for this non-instructional workshop. Work in your own medium. A great opportunity to improve your figurative work. Artists of all levels welcome!

**Date/Time:** Jan. 25 - March 22, Fridays, 9-11 a.m.

(8 weeks, no class Feb. 22)

**Cost:** \$40 members / \$50 nonmembers

**Supplies Needed:** Choose your own medium.

### **Beginning and Intermediate Oil Painting**

*Instructor: Chris Lovely*

This class is a continuation of the beginner oil painting class, but all levels are welcome. The class will include still life, drapery and figures, and will address issues such as light, shadow, color, and techniques to better enhance your paintings.

**Date/Time:** Jan. 21-March 11 (no class Feb. 18),

Mondays 6-9 p.m., 7 weeks

**Cost:** \$95 members / \$105 non-members

**Supplies Needed:** List to be supplied.

### **School of the Frozen Brush (Outdoor Painting in Winter) – Oil and Watercolor**

*Instructor: Kevin Shea*

With the appropriate gear, working in winter snow and light may be the most exhilarating experience painting has to offer. Informal instruction and some demonstration will focus on balance, form, color, and encourage a basic appreciation for the stillness and beauty of the outdoors in winter.

**Date/Time:** Jan. 26-March 16, Sat., 1-5 p.m. 8 sessions

**Cost:** \$210 members / \$230 non-members

**Supplies Needed:** Painting equipment and gear for outdoor painting, and WARM winter clothing.

### **Landscape Painting, Outdoors** (one day workshops)

*Instructor: Charles Shurcliff*

For painters who feel that they are adept at painting but not "getting the scene." Painters will meet at the NAA and then go on location. *Dress for the weather!*

**Date/Time:** Sun. Jan 27 & Sun. Mar. 24, 1-4 p.m.

**Cost:** \$40 per person (per day)

**Supplies Needed:** Your usual materials, any medium.

### **Two Day Oil Painting Workshop**

*Instructor: Dennis Poirier*

This class will observe the effects of light on various materials and objects in the traditional still life, and, if

weather permits, work on location in the area.

Students are encouraged to bring along drapery cloth, vases, old toys or dolls, or objects they may like to paint in a still life composition. Students can use canvases or panels, and may work with oils or alkyds.

**Dates/Time:** Feb. 2-3, Feb. 16-17 & March 16-17, 10 a.m. - 2 p.m.

**Cost:** For 1 day: \$55 members / \$65 non-members

For 2 days: \$90 member / \$100 non-member

**Supplies Needed:** oil painting supplies: titanium white, cad yellow light, cad yellow med., yellow ochre, cad red, Venetian red, French ultramarine blue, Prussian or thalo blue, ivory black. Brushes: size 2, 4, 6, & 8. Odorless turps, paper towels, and choice of medium; copal, maroger, alkyd glazing medium.

### **Decorative Painting Class**

*Instructor: Michelle Mintz*

Students will learn a variety of decorative painting techniques with acrylic paints, from Old World to Trompe-l'oeil. Creating different finishes and gilding with gold or silver foil will be covered.

**Date/Time:** Jan. 23-March 6, Wednesdays 7-9:30 p.m.

**Cost:** \$90 members / \$95 nonmembers

**Supplies Needed:** unfinished wooden piece of small furniture, i.e. shelf, tray, magazine rack, foot stool, etc.

### **How to Create Collage – Explore, Experiment and Learn**

*Instructor: Debra Grubbs*

Discover how such masters such as Matisse, Picasso, Rauschenberg and others used the elements of design in their work and apply them to your own tactile wonderland. This class provides students with necessary skills to create their own collages. By using a step-by-step approach, it concentrates on the artist's tools of design, color, texture, movement, and pattern. Each class highlights the methods of a different master.

**Date/Time:** Jan. 24 - March 7 (6 weeks, no class Feb. 21), Thursdays 7 - 9:30 p.m.

**Cost:** \$85 members / \$95 nonmembers

**Supplies Needed:** watercolor paints, paper (at least 140 lb.), and brushes. Other supplies will be provided.

### **How to Create Collage Workshops – Explore, Experiment and Learn**

*Instructor: Debra Grubbs*

Beginner/experienced

This is a series of half-day workshops. (Same general description as class above, in a workshop format.)

**Date/Time:** Jan. 26-March 9 (no class Feb. 23), Saturdays 9-12 a.m.

**Cost:** \$20/day plus materials (\$5 each workshop)

**Supplies Needed:** Students only need to bring watercolor paint and brushes. Other supplies will be provided.

### **Art for Non-Artists (a.k.a.: Artists' Secrets for Having Fun)**

*Instructor: Lillian M. Coolidge*

This class is designed to be your very first art class. It's for anyone who may feel too intimidated to take a beginning art class because they lack a basic introduction to the use and kinds of materials artists use, don't know how to draw, and have no formal art history education. In this class, you will be introduced to various different mediums, complete a project in class using each of these mediums, and be exposed to some art history. At the end of the class, students should feel confident enough to take a beginning art class, and have a new appreciation of artworks viewed in any museum or gallery. Recommended for adults; young adults are also welcome.

**Date/Time:** Thurs. eves, Jan. 24 - Feb. 28, 7-9 p.m.

**Cost:** \$125

**Supplies Needed:** includes ALL materials.

### **Photography Workshop I**

*Instructor: Elizabeth Buckley*

Learn creative control of photography's most basic tool, the 35mm camera. A fun, 6-week course, providing instruction, discussion and light critique in a workshop atmosphere. With an emphasis on creativity and expression, this class will also provide technical information presented in an easy-to-understand format. Learn to enhance your photographs using f-stops, shutter speed, depth of field, and selective focus. Class also includes tips on using filters, effectively metering and lighting subjects, and choosing and using today's wide array of cameras, films and accessories. Students will work on assessing film, working with a lab, as well as framing and presentation. Suitable for beginning to intermediate adults or high school age students who own an adjustable 35 mm camera.

**Date/Time:** Jan. 22-Feb. 26 (6 weeks), Tues. 7-9 p.m.

**Cost:** \$79 members / \$85 nonmembers

### **Field Photography** (one day workshops)

*Instructor: Will Richard*

The theory and practice of field photography will constitute constructs with time (weather permitting), split between classroom and field. It is important that each student come prepared to spend time in the field (Newburyport area). Subjects covered will include: use of light – natural and fill flash, film types, light meter, depth of field, contrast exposure, filters, composition and framing, pattern and texture, perspective, weather, and equipment maintenance. Dress for 2+ hours in the field (more info. on clothing see education brochure).

**Date/Time:** Sat., Feb. 23, March 2 & March 9, 9 a.m. to 3 p.m.

**Cost:** \$100 members / \$125 non-members (per day)

**Supplies Needed:** Either a 35 mm camera or medium format camera, at least 2 rolls of film daily, tripod if you have it & your camera manual.

### **Lights, Camera, Action:**

#### **What the Movies Teach Us About Writing**

*Instructor: Aine Greaney*

A two-part workshop on basic fiction writing for advanced beginner and intermediate writers. Learn beginnings, plot, flashbacks, fast forwards, and dialogue. Students will write in class and learn fiction writing techniques as used in two popular movies.

**Date/Time:** Mondays, Jan. 28 & Feb. 4, 7 - 9 p.m.

**Place:** NAA library (with new chairs!)

**Cost:** \$55 members / \$60 non-members

### **See Dilbert Write**

*Instructor: Aine Greaney*

The workplace got your soul? Write your way back to the real you. Lube those creative juices – yeah, even in the cube. Includes personal essay writing techniques, in-class writing exercises, discussion. For beginners, and all writers.

**Date/Time:** Monday, Feb. 25, 7-9 p.m.

**Cost:** \$35 members / \$40 non-members

### **Guitar Instruction**

*Instructor: John Tavano*

Instructions in the rudiments of guitar playing which will include: basic chord structure, guitar tuning, sight-reading, ensemble playing, finger style and flat picking style, basic theory and voice accompaniment.

**Date/Time:** Jan. 26 - March 10, Sat. mornings, 9:30 - 10:30 a.m. & 11 a.m.-12 p.m.

**Cost:** \$15 per hour, per student

**Supplies Needed:** Guitar, music stand, and spiral notebook. All music materials provided by the instructor.

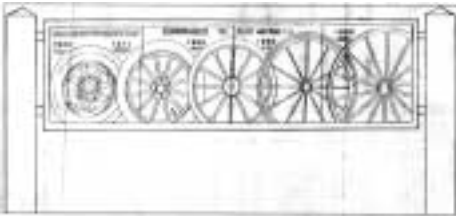
## “The Affable Fellow”

Diane Mcloed-Packer’s sculpture, “The Affable Fellow,” won the Meiselman Memorial Award for Traditional Sculpture at the Salmugundi Club Galleries in New York. It may be of additional interest that the model for this sculpture was long-time NAA member, Philip Stern, and the piece was sculpted in the NAA Sculpture Workshop.



from the Daily News  
11/16/01

## Two in the News



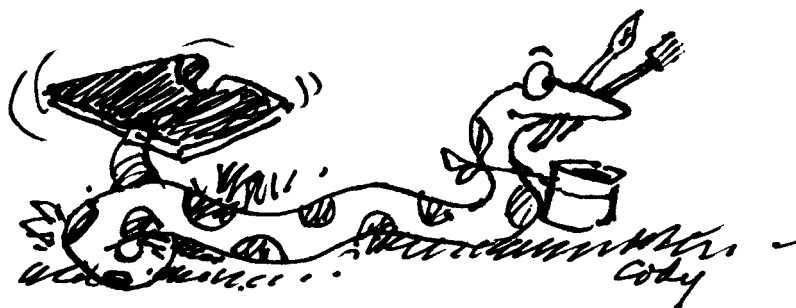
from The Daily News, 11/5/01

Jeff Briggs’s design for a public sculpture to represent the carriage and auto history of Amesbury, won the Amesbury Cultural Council Award for 2002.



from The  
Daily News,  
11/30/01,  
© U.S.  
Postal  
Service

Lance Hidy’s design for a U.S. postage stamp, “Mentoring a Child,” is to be issued in January, 2002. It will be one of the largest U.S. postage stamps.



Al Moskowitz, NAA Vice President, Linda Miller, Architect, and David Hall, President of Hall and Moskow, review plans for the refurbishment of the interior of the Weigh Station building.

## Gallery Capital Fund Drive

Thanks to the overwhelming support of the NAA community, the Art Association has grown tremendously in recent years. As a result, the Association is expanding its facilities with a new Gallery Annex. This is a part of a larger plan in 2004 to develop the Newburyport Art Association Water Street Art Center, with a new two-story wing and sculpture park that will bound the proposed Newburyport Harbor Walk and Bike Trail.

NAA has received \$55,000 in grants from area foundations, so we are well on our way with the Gallery Annex. However, the Association needs an additional \$25,000 from our community of members and supporters. We invite you, through a financial contribution, to be part of this long-awaited effort. NAA has received \$12,600, from member donors, toward this goal.

NAA is looking for support from all its members. You are encouraged to join and become a part of this important project. Send your tax-deductible contributions to: NAA, Laura Coombs Hills Gallery Capital Fund, P.O. Box 28, Newburyport, MA 01950.



## Gallery Addition to Start Soon

Work on the new Laura Coombs Hills Gallery addition to the Newburyport Art Association building will start in mid-December (maybe you have noticed the orange outline of the foundation on the pavement). The first step in the project is the excavation and pouring the concrete foundation. Then, the circa 1890 weigh station building will be moved 400 feet from its location at the south end of the Hall and Moskow lot, and placed adjacent to the NAA building. A 5-foot-wide, handicapped accessible, ramped entrance will be constructed, and enclosed as an integral part of the new gallery.

NAA has contracted a professional engineering firm to design the new central heating and air conditioning systems for the NAA building and gallery. An electrical contractor has begun planning the installation of a hard-wired smoke detection system that will be linked to the city fire department.

This project is being performed in a partnership developed between NAA and David Hall, president of Hall and Moskow, over the last three years. Linda Miller is the architect. Completion of the work is scheduled for May, 2002.



**NEWBURYPORT ART ASSOCIATION, INC.**  
 65 Water Street / P.O. Box 28  
 Newburyport, MA 01950

**NON-PROFIT ORG  
 US POSTAGE PAID  
 NEWBURYPORT MA  
 01950  
 PERMIT NO 176**

**RETURN SERVICE REQUESTED**

**Dated Material — January 2002**

## **Upcoming Shows**

### **NAA Winter Juried Show**

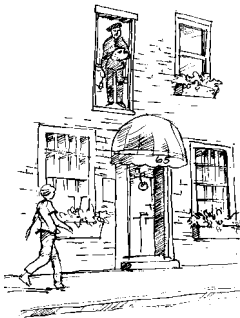
**Part I:** Jan. 18 - Feb. 16

*Painting, watercolor, pastel,  
 mixed media, fine crafts*

**Part II:** Feb. 22 - March 20

*Drawing, printmaking,  
 photography, sculpture*

*NAA is a non-profit organization.*



*illustration by  
 Sue Spellman*

## **Special Note**

The NAA thanks Cal Harms for the display in the window boxes which so enhances the appearance of our building and provides an appealing entrance for visitors. We also thank Kerry Callahan for decorating the NAA building for the holiday season by putting up wreaths in the windows.

The NAA holiday party at the gallery on Newburyport's Invitation Night wouldn't have been possible without the preparation and constant attention to the food and drinks by Lydia and Lowell Widmer, and the help of staff member Andrea Alkunis.

## **Multi-Talented Mattina Joins NAA Staff**

Barbara Ann Mattina has joined the NAA staff with responsibility for managing print, publicity, and the NAA website updates. NAA mails over 30,000 items per year, and maintains an active website. Barbara will focus on making the print, publicity and promotion effective and efficient. She will manage the distribution of work to graphic designers and print houses, and coordinate the ongoing inputs to the NAA website development studio.

Barbara, a long-time artist member of the NAA, has thirty-five years experience as a graphic designer and print manager. She has designed the brochures, posters and programs for the Newburyport Choral Society for fourteen years. Having served as a board member, she also performed in the Choral Society's recent 2001 Winter Concert of Vivaldi's *Gloria* and Music of the Holiday Season, where she was a featured soprano and a guest conductor.



## **The Source: The NAA Website**

Almost everything you may want to know about the NAA, its artists and activities, can be found on our website. History, exhibits, individual artists and their work, etc. Just click on and be informed.

**[www.newburyportart.org](http://www.newburyportart.org)**